



# MONTHLY MEMBERSHIP PROGRESS REPORT

District 26 M5

Results as of: 04/30/2018

GMT: JOE AL PICONE

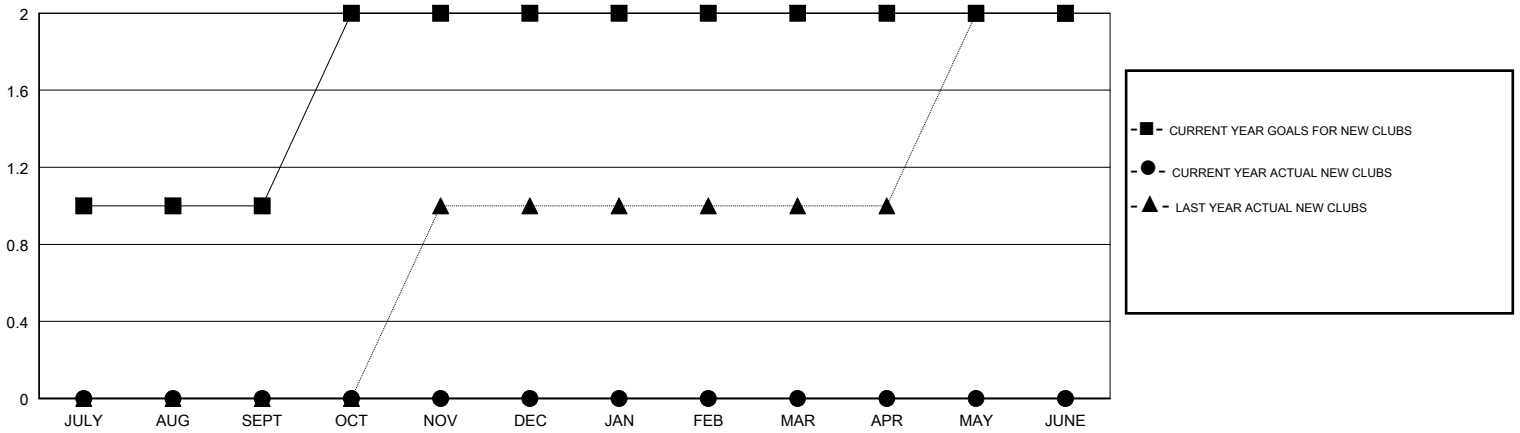
LOCATION MISSOURI

GMT CA

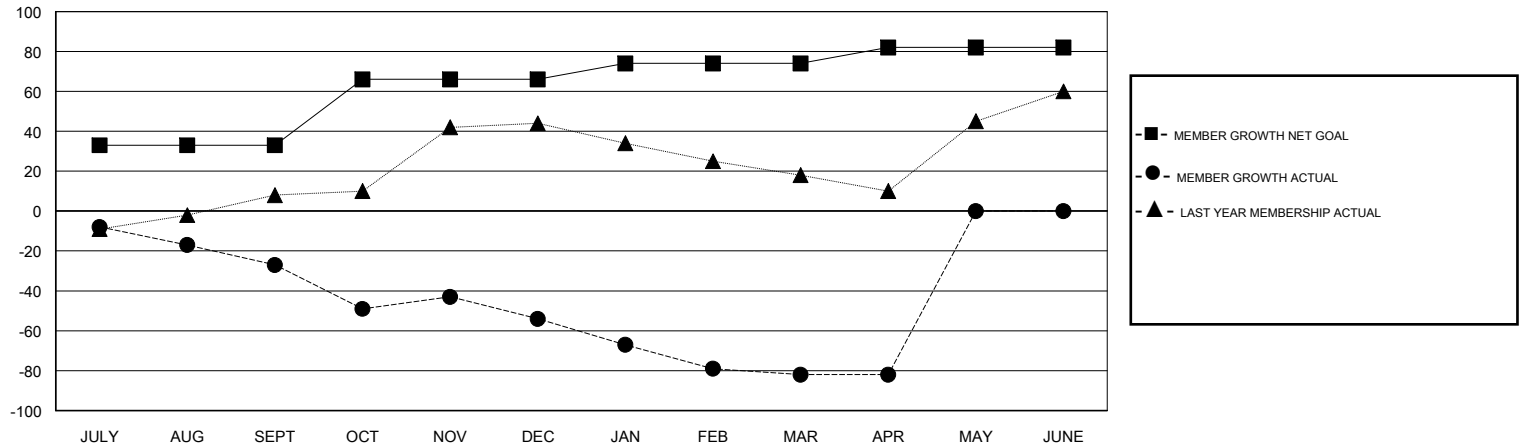
Clubs			
RESULTS FOR 2017-2018			
QUARTER	NEW CLUB GOAL	NEW CLUBS	DROPPED CLUBS
JULY/AUG/SEPT	1	0	0
OCT/NOV/DEC	1	0	1
JAN/FEB/MAR	0	0	0
APR/MAY/JUNE	0	0	0

Members			
RESULTS FOR 2017-2018			
QUARTER	MEMBER GROWTH NET GOAL	MEMBER GROWTH ACTUAL	DROPPED MEMBERS ACTUAL (including transfers)
JULY/AUG/SEPT	33	24	51
OCT/NOV/DEC	33	25	47
JAN/FEB/MAR	8	22	43
APR/MAY/JUNE	8	12	12

GOALS AND ACTUAL NEW CLUBS CUMULATIVE



GOALS AND ACTUAL MEMBERS CUMULATIVE



DROPPED CLUBS: 1
------------------

27 CLUBS OF 50 ADDED 1 OR MORE NEW MEMBERS

GENDER DISTRIBUTION	
MALE	790 (67.35%)
FEMALE	383 (32.65%)
Women Percentage Fiscal Year Goal: 35%	

DROPPED MEMBERS	
DECEASED	22
CLUB CANCELLED	4
OTHER	127
<b>TOTAL</b>	<b>153</b>

[CLICK HERE FOR CUMULATIVE MEMBERSHIP DATA](#)

TOTAL FAMILY UNIT MEMBERS	249
FAMILY MEMBERS PAYING HALF DUES	129